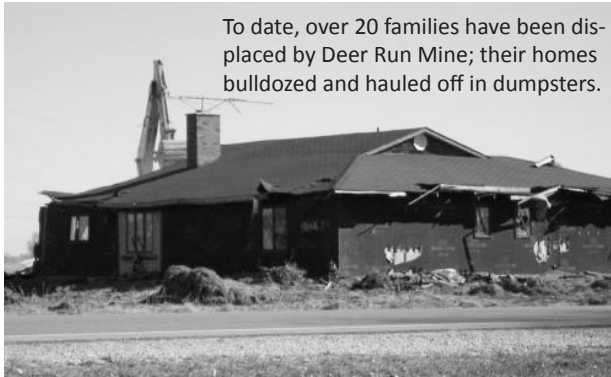


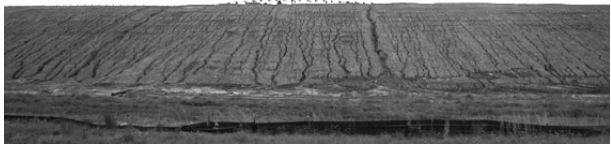
CALM'S CONCERNS

- Damage caused by planned **subsidence** to our prime farmland, roads and streams. Deer Run Mine plans to longwall 6 panels that are over 1,400 feet wide and 3 miles long; **dropping the ground 4 to 7 feet.**
- An **80-foot-tall high-hazard toxic coal slurry dam** being constructed with coarse coal waste within the city limits of Hillsboro; the company has applied for permit for a **second impoundment.**
- **Toxic coal pollution** runoff and **erosion** entering our streams and lakes in the **Shoal Creek Watershed.**
- **Lost Homes-Lost Community** when people are forced to move from their homes.



To date, over 20 families have been displaced by Deer Run Mine; their homes bulldozed and hauled off in dumpsters.

Office of Surface Mines density tests of coal slurry impoundment walls showed flaws at all seven sites surveyed in West Virginia, with only 16 field tests meeting the standards out of 73 conducted.



FOR MORE INFORMATION CONTACT:

CALM
PO Box 274
Hillsboro, IL 62049

www.citizensagainstlongwallmining.org

This brochure sponsored by Citizens Against Longwall Mining with a grant from Heartland Coalfield Alliance.

CITIZENS AGAINST LONGWALL MINING

Citizens Against Longwall Mining has been fighting the Deer Run Coal Mine in Hillsboro, IL since 2004. We are opposed to coal mining practices such as longwall mining that destroy our fertile farmland, as well as coal ash and coal slurry disposal methods that threaten the health of our communities, lands and waters.

Our goal is to preserve the land of central Illinois – its value for productive agriculture, and its environmental integrity for generations to come.

- Decreased quality of life
- Increased health care costs
- Decreased productivity--missed days of work and school
- Clean up costs

**AIR
POLLUTION
COSTS
TO
COMMUNITIES**



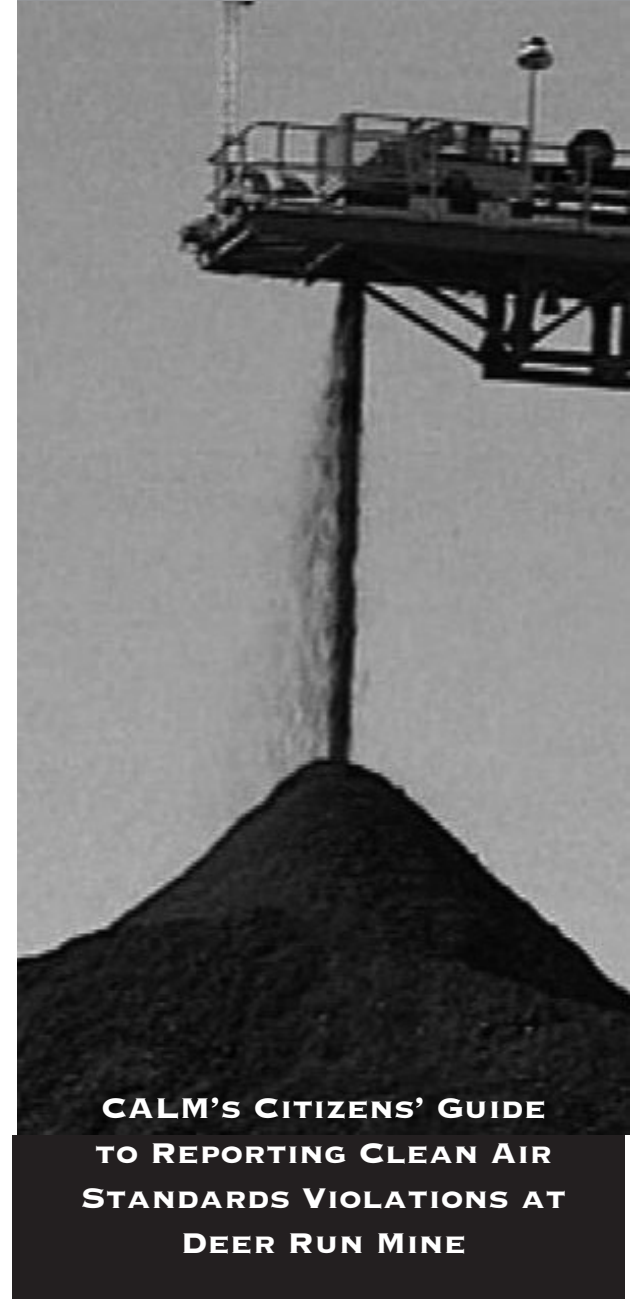
**CHOOSE
STEWARDSHIP OF
THE EARTH**

~ ~

**SUPPORT
RENEWABLE
WIND AND
SOLAR ENERGY
AND ENERGY
EFFICIENCY**



CITIZENS AGAINST LONGWALL MINING PROMOTING A CLEANER ENVIRONMENT IN MONTGOMERY COUNTY



**CALM'S CITIZENS' GUIDE
TO REPORTING CLEAN AIR
STANDARDS VIOLATIONS AT
DEER RUN MINE**



Living near dirty and dangerous coal at Deer Run Mine jeopardizes families in Montgomery County. Known toxins in coal dust include arsenic, mercury, and other heavy metals. Anyone who's exposed to blowing dust from uncovered piles of crushed or pulverized coal is at risk. Coal dust is associated with chronic bronchitis, emphysema, and pulmonary fibrosis (pneumoconiosis).

Coal also causes environmental contamination through the leaching of toxic heavy metals into our water.

HAZARDS OF LIVING NEAR A COAL MINE

Coal mines are hazardous to your health. Millions of tons of toxins are released into the environment, polluting soil, water and air.

This affects anybody who eats food, breathes air, or drinks water.

If you live near Deer Run Mine you have an increased chance of developing:

- a respiratory ailment
- increased asthma attacks
- kidney disease
- chronic pulmonary obstructive disease
- high blood pressure

There are no air monitors in Montgomery County. Your help is needed to report air pollution from Deer Run Mine. If you see coal dust or fire and smoke from a coal pile report it immediately to the Illinois EPA.



TO REPORT AN AIR POLLUTION EVENT TO THE IEPA BUREAU OF AIR

Telephone:
1-888-372-1996

Online:
<http://www.epa.state.il.us/pollution-complaint/>

TO REPORT AN ENVIRONMENTAL EMERGENCY

Call 1-800-782-7860

Surface Facility
Deer Run Mine

