



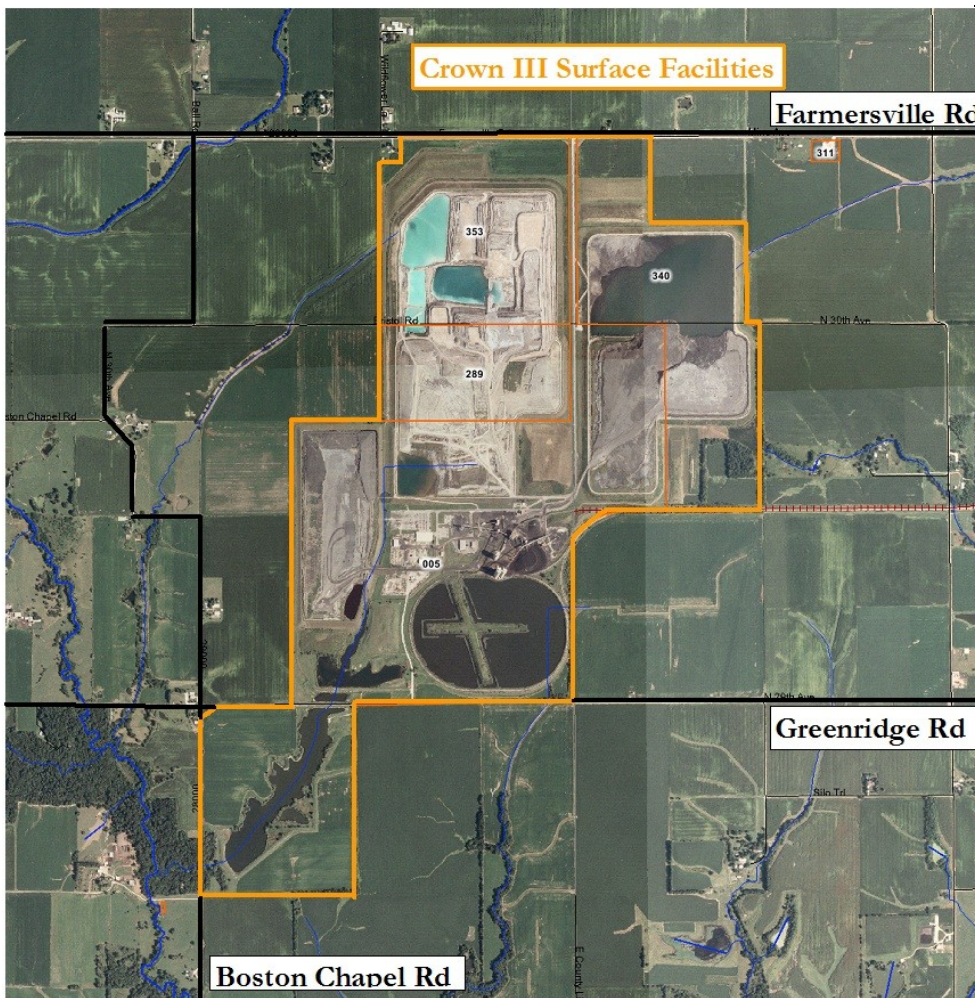
SIERRA
CLUB
FOUNDED 1892



Will coal ash disposal at the Crown III Mine pollute nearby water resources?

To make sure your concerns are heard, attend Illinois Environmental Protection Agency's **Public Hearing** on the issuance of a NPDES Water Discharge Permit Renewal for Springfield Coal Co., LLC's Crown III Mine:

Tuesday, December 14th, 2010 at 6:00 pm
Girard City Hall, 111 West Madison, Girard, Illinois



The Illinois EPA has issued a draft NPDES permit renewal to Springfield Coal Co., LLC to discharge polluted runoff into tributaries of Horse and Macoupin Creeks from Crown III.

Due to requests from concerned citizens and advocacy groups, the EPA will hold a public hearing to accept comments on the permit.

If you are concerned about water pollution from coal processing or coal ash disposal, **this hearing is your chance to convince IEPA to strengthen or deny the permit renewal.**



Our Concerns

We object to the Illinois EPA's issuance of an NPDES permit renewal because the Agency has not adequately assessed the impact that continued and expanding coal ash and coal slurry disposal at the mine will have on water quality and wildlife in Montgomery and Macoupin Counties.

Specifically, the Illinois EPA has not adequately:

- ⇒ Completed a thorough characterization of the coal ash and coal slurry to be disposed of at the mine site;
- ⇒ Completed a comprehensive review of the condition and uses of adjacent streams and underlying groundwater;
- ⇒ Reviewed onsite operations and disposal plan proposed by Springfield Coal Company;
- ⇒ Drafted a permit that will be protective of the streams, groundwater and their users.

What Can You Do?

Learn more and attend the hearings:

Join us immediately prior to the Public Hearing to learn more about the issue, to get or give advice on important questions to ask, and to make sure all of our questions are being covered. We'll meet at **5:00 p.m. at Doc's at 133 South 2nd Street in Girard**. Plan to grab a bite to eat or something to drink, and meet neighbors who share your concerns. We will leave for the hearing at 5:45pm.

These public hearings are held for citizens to express concerns about how this project will affect them, and to ask questions and learn more about the project. Speakers need not know technical aspects of the issue – this is the time to ask questions and to express your concerns to the Illinois Environmental Protection Agency.

Submit Written Comments

Comments must be postmarked or e-mailed by **midnight, January 13, 2011**. Electronic comments must specify **Crown Mine NPDES** in the subject line and must be sent to **epa.publichearingcom@illinois.gov**.

Hearing Officer Dean Studer
Illinois Environmental Protection Agency
1021 North Grand Avenue East
P. O. Box 19276
Springfield, IL 62794-9276

For More Information:

Arlis Bates, Montgomery Co. Resident, 217-532-2708
Brian Perbix, Coal Country Organizer, Prairie Rivers Network, Illinois Sierra Club, 217-720-9289
Traci Barkley, Prairie Rivers Network, Water Resources Scientist, 217-344-2371